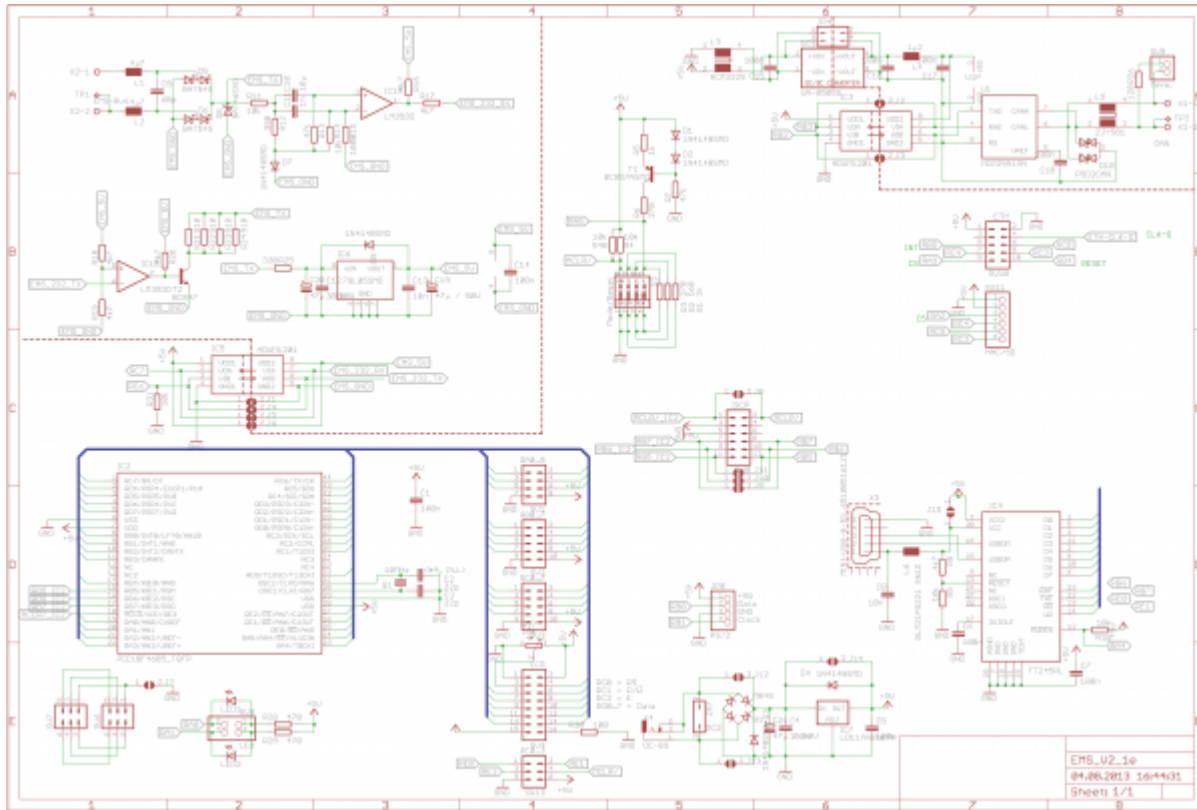


Aufbau

Hier die Informationen die zur Bestellung der Bauteile und die Bestückung der Platine notwendig sind...

Schaltplan



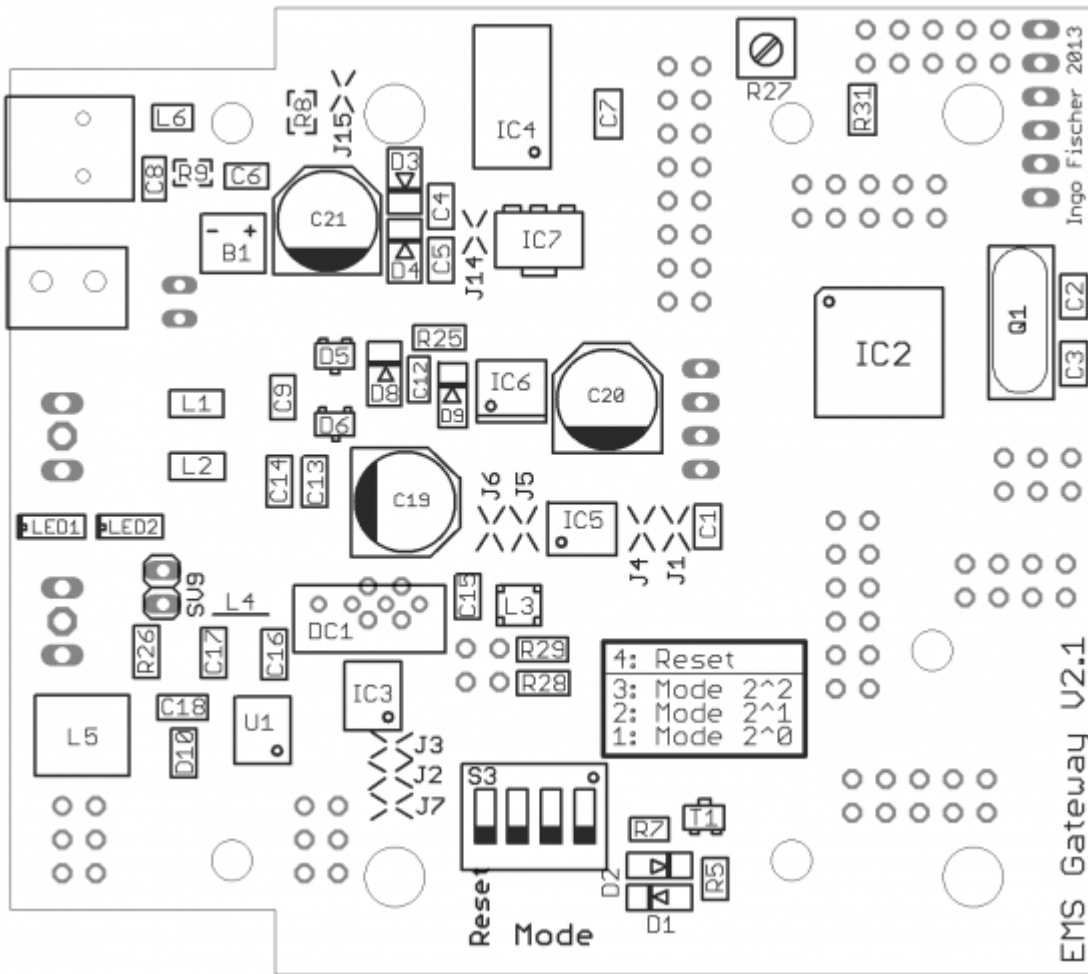
Bauteilliste

ohne CAN

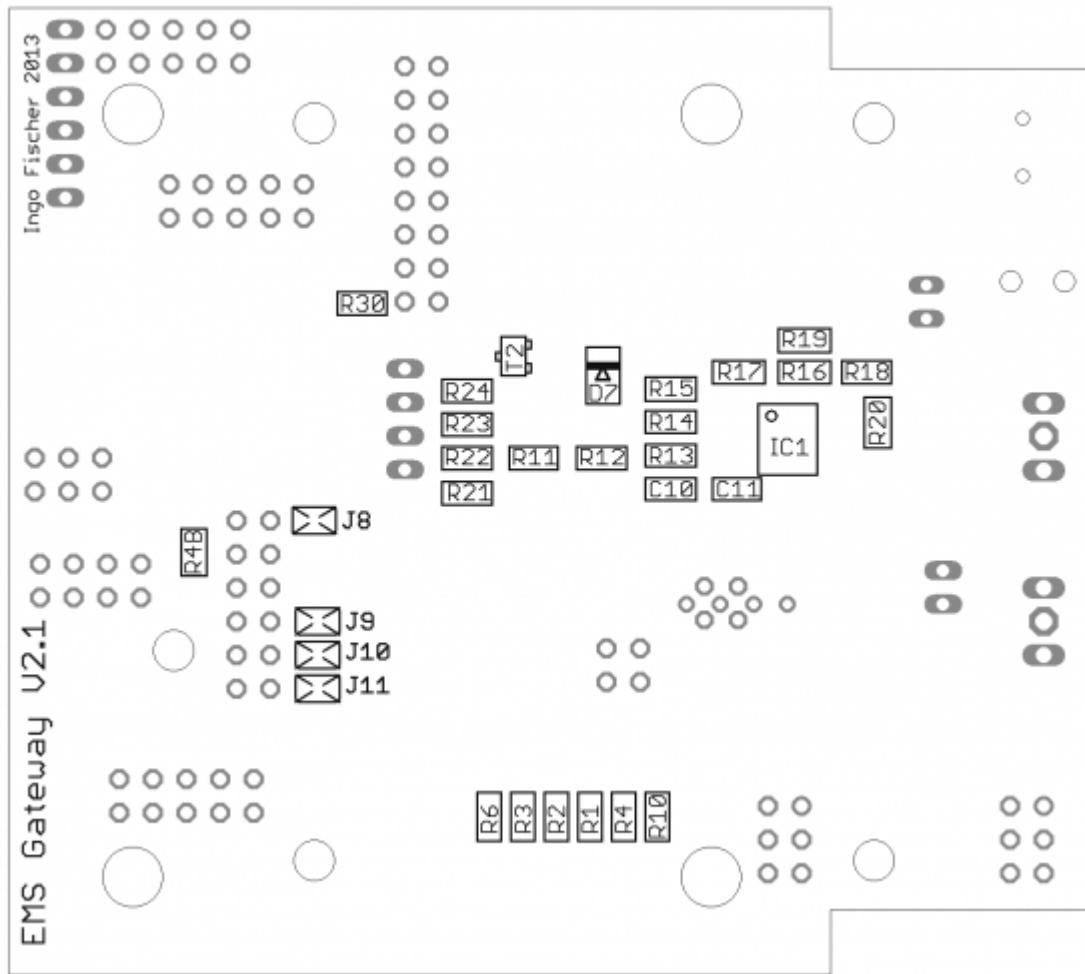
Wert	Bauform	Bauteile
blau	c2	LED1
orange	c2	LED2
1n	C-EUC0805	C11
10µ	C-EUC0805	C10
10k	R-TRIMM3314J	R27
16MHz	CRYSTALSM49	Q1
68p	C-EUC0805	C9
78L05SMD	78L05SMD	IC6
LD1117	LD1117S50TR	IC7
100	R-EU_R0805	R30
100k	R-EU_R0805	R15
330	R-EU_R0805	R25

Wert	Bauform	Bauteile
390	R-EU_R0805	R12
560	R-EU_R0805	R2
ADUM1201	ADUM1201	IC3, IC5
BAT46SMD	BAT46SMD	D8
BC847	BC847	T2
BC857ASMD	BC857ASMD	T1
BLM21PG221 SN1D	WE-KIHQ_0805	L6
DC-8S	DC-8S	X4
DCPP3	DCPP3	X4b
EMS-Bus	W237-02P	X2
FT245RL	FT245RL	IC4
LM393D	LM393D	IC1
MB4S	MB4S	B1
MINI-USB-B	Würth 65100516121	X3
Mode/Reset	SWS004	S3
PIC18F4580_TQFP	PIC18F4580_TQFP	IC2
1k	R-EU_R0805	R1, R5
4µ7	WE-CBF_1210	L1, L2
10n	C-EUC0805	C8, C13
22p	C-EUC0805	C2, C3, C22, C23
47k	R-EU_R0805	R7, R13
270	R-EU_R0805	R3, R6
330n	C-EUC0805	C4, C12
470	R-EU_R0805	R28, R29
BAT54S	BAT54S	D5, D6
47µ / 50V	CPOL-EUE	C19, C20, C21
910	R-EU_R0805	R21, R22, R23, R24
100n	C-EUC0805	C1, C5, C6, C7, C14, C15, C16, C17, C18
1N4148SMD	1N4148SMD	D1, D2, D3, D4, D7, D9
4k7	R-EU_R0805	R8, R16, R17, R18, R19, R20
10k	R-EU_R0805	R4, R4B, R9, R10, R11, R14, R31

Bestückung oben



Bestückung unten



From:
<https://emswiki.thefischer.net/> -

Permanent link:
<https://emswiki.thefischer.net/doku.php?id=wiki:ems:aufbau&rev=1379864704>



Last update: **2015/12/30 21:00**