

Aufbau

Downloads für den EMS-Gateway:



[EMS-Gateway V2.0](#)

[EMS-Gateway V2.1](#)

[Bestückung Oben V2.1](#)

[Bestückung Unten V2.1](#)

Es gibt noch Platinen aus der „Überproduktion“. Allerdings nur zum selber löten. Die Bauteile in der farbig hinterlegten Spalte habe ich noch übrig und werden bei einer Platine mitgeliefert.

Bauteilliste

Downloads für den EMS-Gateway:



[EMS-Gateway V2.0](#)

[EMS-Gateway V2.1](#)

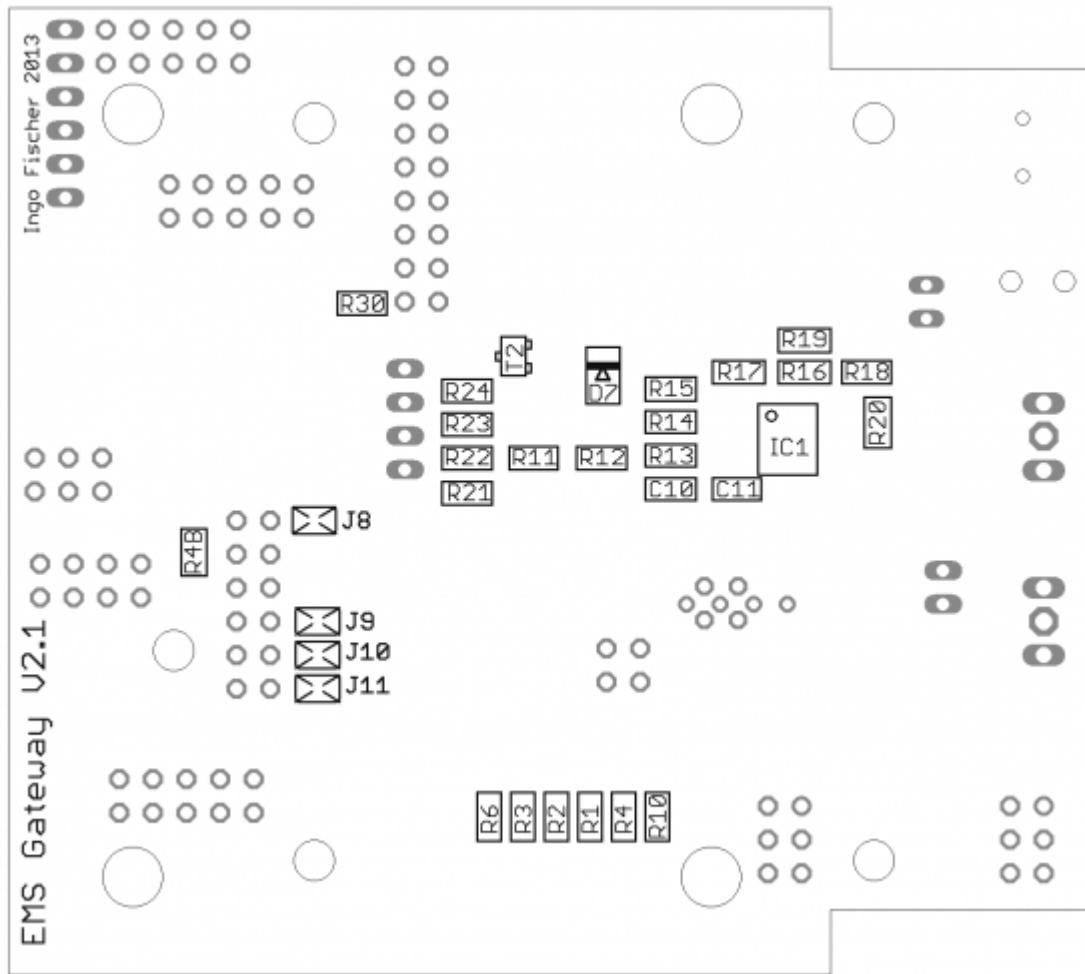
[Bestückung Oben V2.1](#)

[Bestückung Unten V2.1](#)

| @#dddddd:Wert | @#dddddd:Bauform | @#dddddd:Bauteile |
|-----------------------|----------------------|-------------------|
| @#ddffbb:blau | @#ddffbb:c2 | @#ddffbb:LED1 |
| orange | c2 | LED2 |
| 1n | C-EUC0805 | C11 |
| 10µ | C-EUC0805 | C10 |
| 10k | R-TRIMM3314J | R27 |
| @#ddffbb:10MHz | @#ddffbb:CRYSTALSM49 | @#ddffbb:Q1 |
| 68p | C-EUC0805 | C9 |
| 78L05SMD | 78L05SMD | IC6 |
| LD1117 | LD1117S50TR | IC7 |
| 100 | R-EU_R0805 | R30 |
| 100k | R-EU_R0805 | R15 |
| 330 | R-EU_R0805 | R25 |
| 390 | R-EU_R0805 | R12 |
| 560 | R-EU_R0805 | R2 |
| @#ddffbb:ADUM1201 | @#ddffbb:ADUM1201 | @#ddffbb:IC3, IC5 |
| BAT46SMD | BAT46SMD | D8 |
| BC847 | BC847 | T2 |
| BC857ASMD | BC857ASMD | T1 |
| BLM21PG221 SN1D | WE-KIHQ_0805 | L6 |
| @#ddffbb:DC-8S | @#ddffbb:DC-8S | @#ddffbb:X4 |
| @#ddffbb:DCPP3 | @#ddffbb:DCPP3 | @#ddffbb:X4b |
| EMS-Bus | W237-02P | X2 |
| @#ddffbb:FT245RL | @#ddffbb:FT245RL | @#ddffbb:IC4 |
| @#ddffbb:LM393D | @#ddffbb:LM393D | @#ddffbb:IC1 |
| MB4S | MB4S | B1 |
| MINI-USB-B | Würth 65100516121 | X3 |
| @#ddffbb:CAN, EMS-Bus | @#ddffbb:W237-02P | @#ddffbb:X1, X2 |
| @#ddffbb:Mode/Reset | @#ddffbb:SWS004 | @#ddffbb:S3 |

| | | |
|--------------------|--------------------|--|
| PIC18F4580_TQFP | PIC18F4580_TQFP | IC2 |
| 1k | R-EU_R0805 | R1, R5 |
| 4 μ 7 | WE-CBF_1210 | L1, L2 |
| 10n | C-EUC0805 | C8, C13 |
| 22p | C-EUC0805 | C2, C3 |
| 47k | R-EU_R0805 | R7, R13 |
| 270 | R-EU_R0805 | R3, R6 |
| 330n | C-EUC0805 | C4, C12 |
| 470 | R-EU_R0805 | R28, R29 |
| BAT54S | BAT54S | D5, D6 |
| 47 μ / 50V | CPOL-EUE | C19, C20, C21 |
| 910 | R-EU_R0805 | R21, R22, R23, R24 |
| @#ddffbb:100n | @#ddffbb:C-EUC0805 | @#ddffbb:C1, C5, C6, C7, C14, C15, C16, C17, C18 |
| @#ddffbb:1N4148SMD | @#ddffbb:1N4148SMD | @#ddffbb:D1, D2, D3, D4, D7, D9 |
| 4k7 | R-EU_R0805 | R8, R16, R17, R18, R19, R20 |
| 10k | R-EU_R0805 | R4, R4B, R9, R10, R11, R14, R31 |
| 1 μ 2 | WE-CBF_1210 | L4 |
| 120 | R-EU_R0805 | R26 |
| @#ddffbb:ACM3225 | @#ddffbb:ACM3225 | @#ddffbb:L3 |
| @#ddffbb:MCP2551SN | @#ddffbb:MCP2551SN | @#ddffbb:U1 |
| PSD2CAN | PSD2CAN | D10 |
| Term. | PINHD-1x2 | SV9 |
| @#ddffbb:VA-0505S | @#ddffbb:VA-0505S | @#ddffbb:DC1 |
| ZJYS81 | ZJYS81 | L5 |

Bestückung Unterseite



From:
<https://emswiki.thefischer.net/> -

Permanent link:
<https://emswiki.thefischer.net/doku.php?id=wiki:ems:aufbau&rev=1380112735>



Last update: **2015/12/30 21:00**